

HBIS SERBIA



HBIS GROUP Serbia Iron & Steel Ilc Belgrade

GENERAL INFORMATION ON PLANT FACILITIES



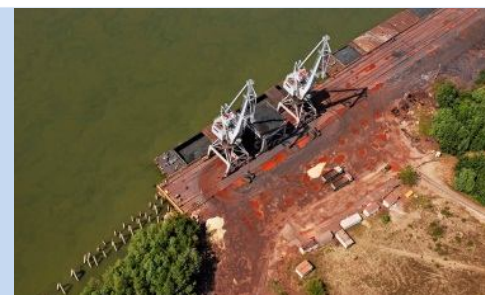
SMEDEREVO PLANT

- The company began producing in 1964, continuing to 1979 when the new plant in Radinac was constructed.
- Over 5.000 people employed.
- Plant's design capacity is 2.2 million metric tons per year.
- Two blast furnaces, three-furnace converter shop and continuous casting complex., processed in Hot Strip Mill and Cold Rolling Mill units.
- Certificates: ISO 9001, ISO 14001, ISO 45001, HACCP, ISO/IEC 17025, ISO 22000, CE sign per standard EN10025-2, AD 2000-Merkblatt W0 and PED 97/23/EC, Lloyd's Register, DNV-GL.

OLD PORT SMEDEREVO



NEW PORT SMEDEREVO



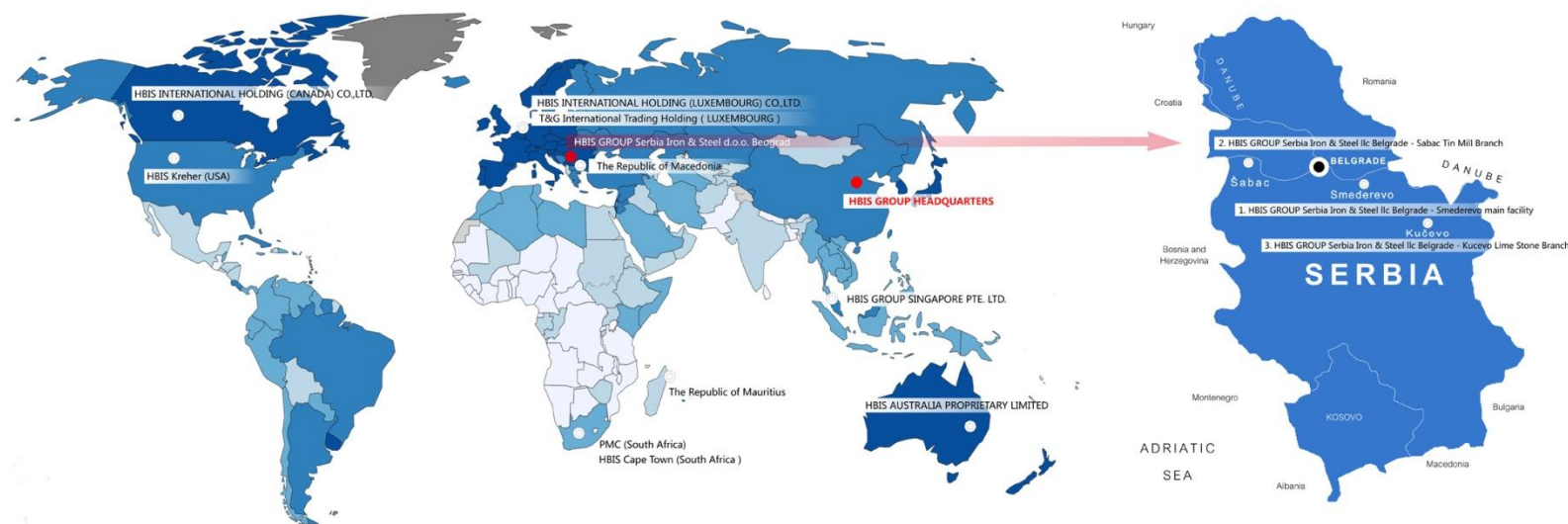
TIN PLATE PRODUCTION SABAC



HBIS WORLD MAP

GENERAL INFORMATION ON PLANT FACILITIES

HBIS GROUP INDUSTRIAL LAYOUT



HBIS Group Co., Ltd ("HBIS") is one of the world's largest iron & steel maker and integrated service provider measured by production capacity. The Group encompasses over 20 subsidiaries with 120,000 employees enrolled. In 2021, our revenues stood at over 50 billion US\$. We ranked No. 200 in Fortune Global 500. HBIS is the member of World Steel Association's Executive Committee. HBIS Group has established a significant presence in steel industries home and abroad. Our major products cover all types, making us the steel maker with the widest range of products.

HBIS SERBIA



PRIMARY OPERATIONS

HBIS SERBIA

PRODUCTION CYCLE

IRON PRODUCTION: SINTER PLANT AND BLAST FURNACES

HBIS GROUP Serbia Iron & Steel Ilc Belgrade

GENERAL INFORMATION ON PLANT FACILITIES

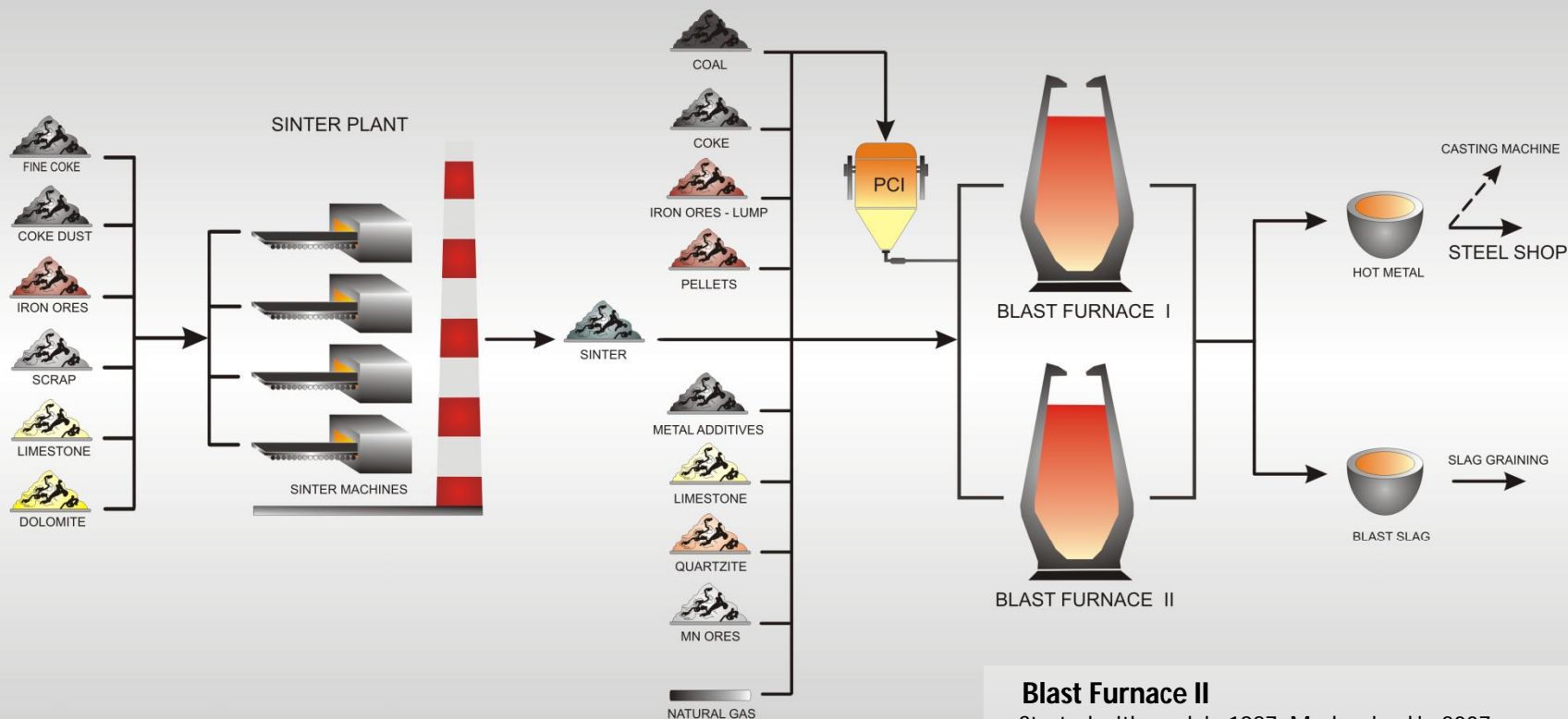
Sinter Production

PCI – Pulverized coal injection

Started with work in 2011.

Blast Furnace I

Started with work in 1971. Idled in 1987. Modernized in 2005.



Blast Furnace II

Started with work in 1987. Modernized in 2007.

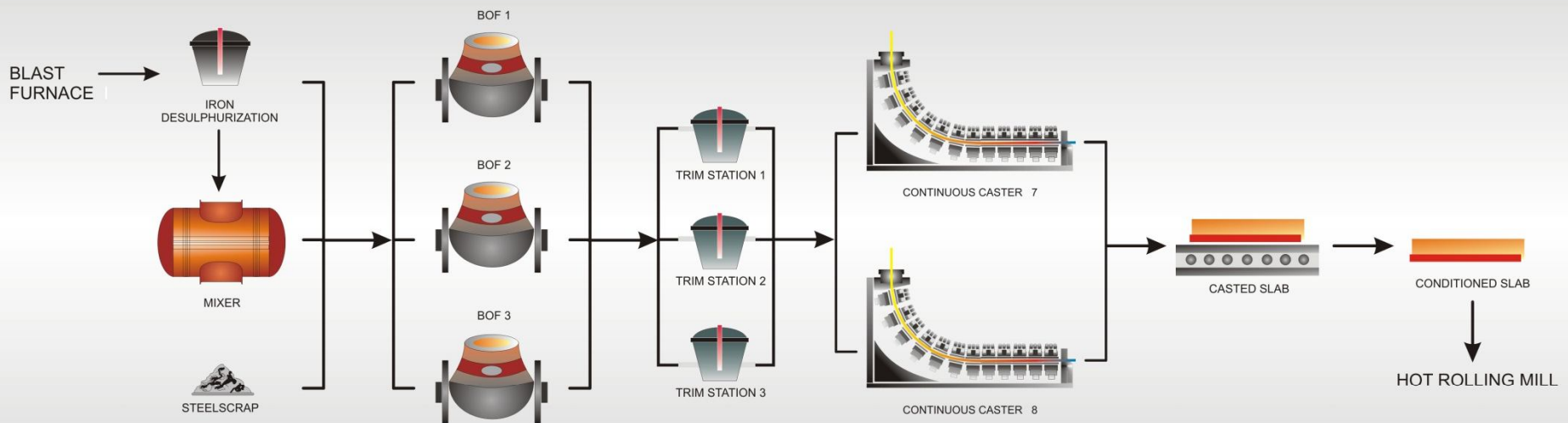
HBIS SERBIA

PRODUCTION CYCLE

STEEL SHOP: CONVERTER PROCESSES, TRIMMING STATION, CONTINUOUS CASTING

HBIS GROUP Serbia Iron & Steel Ilc Belgrade

GENERAL INFORMATION ON PLANT FACILITIES



Mixer

Three converters / vessels

Two continuous casting machines

HBIS SERBIA

GENERAL INFORMATION ON PLANT FACILITIES



FINISHING OPERATIONS

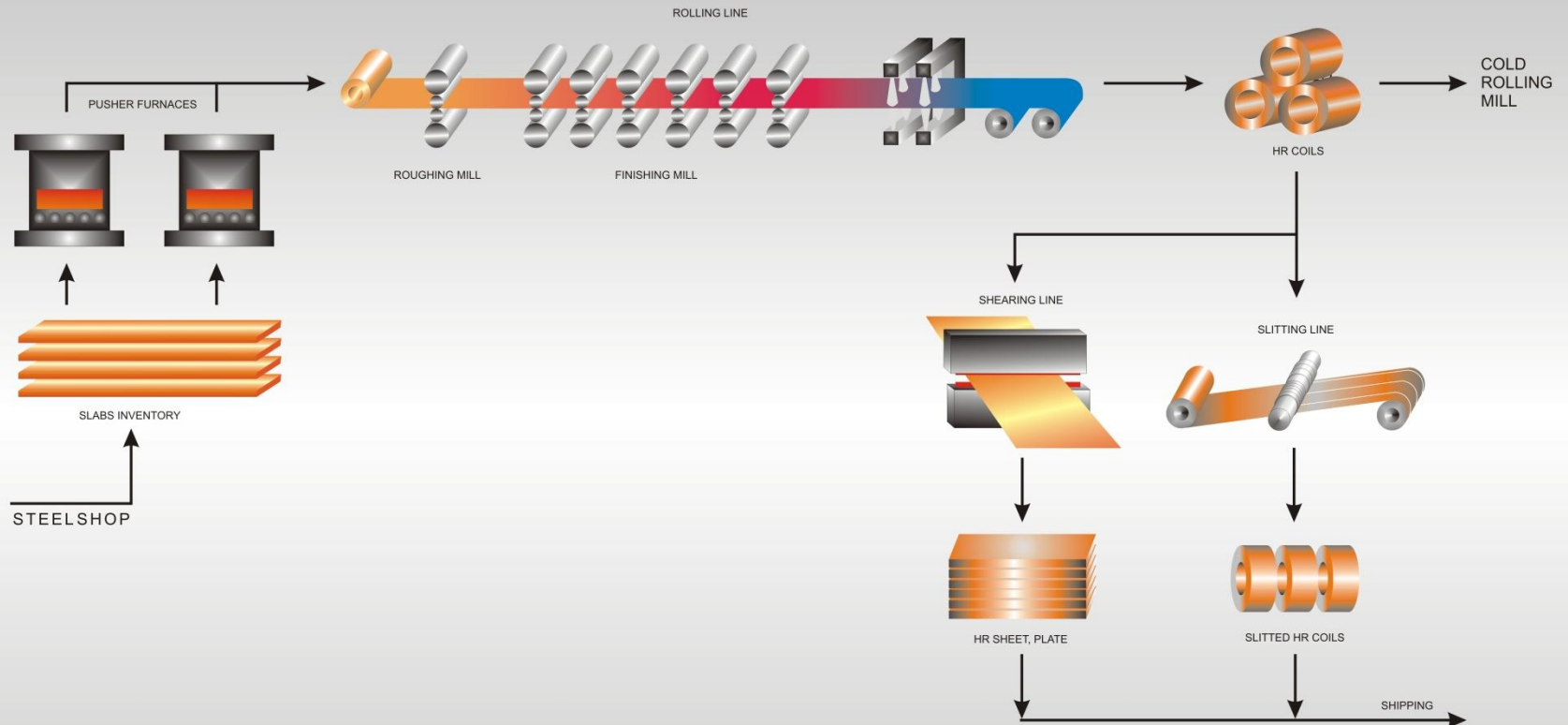
HBIS SERBIA

PRODUCTION CYCLE

HOT STRIP MILL: ROUGHER MILL, FINISHING MILL, COOLING DOWN STRIPS

HBIS GROUP Serbia Iron & Steel Ilc Belgrade

GENERAL INFORMATION ON PLANT FACILITIES



Pushing
Furnaces 1 and 2

Reversible
Rougher Mill

6-stand
Finishing Mill

Coilers 1 and 2

Hot shears
and slitting line

HBIS SERBIA

PRODUCTION CYCLE

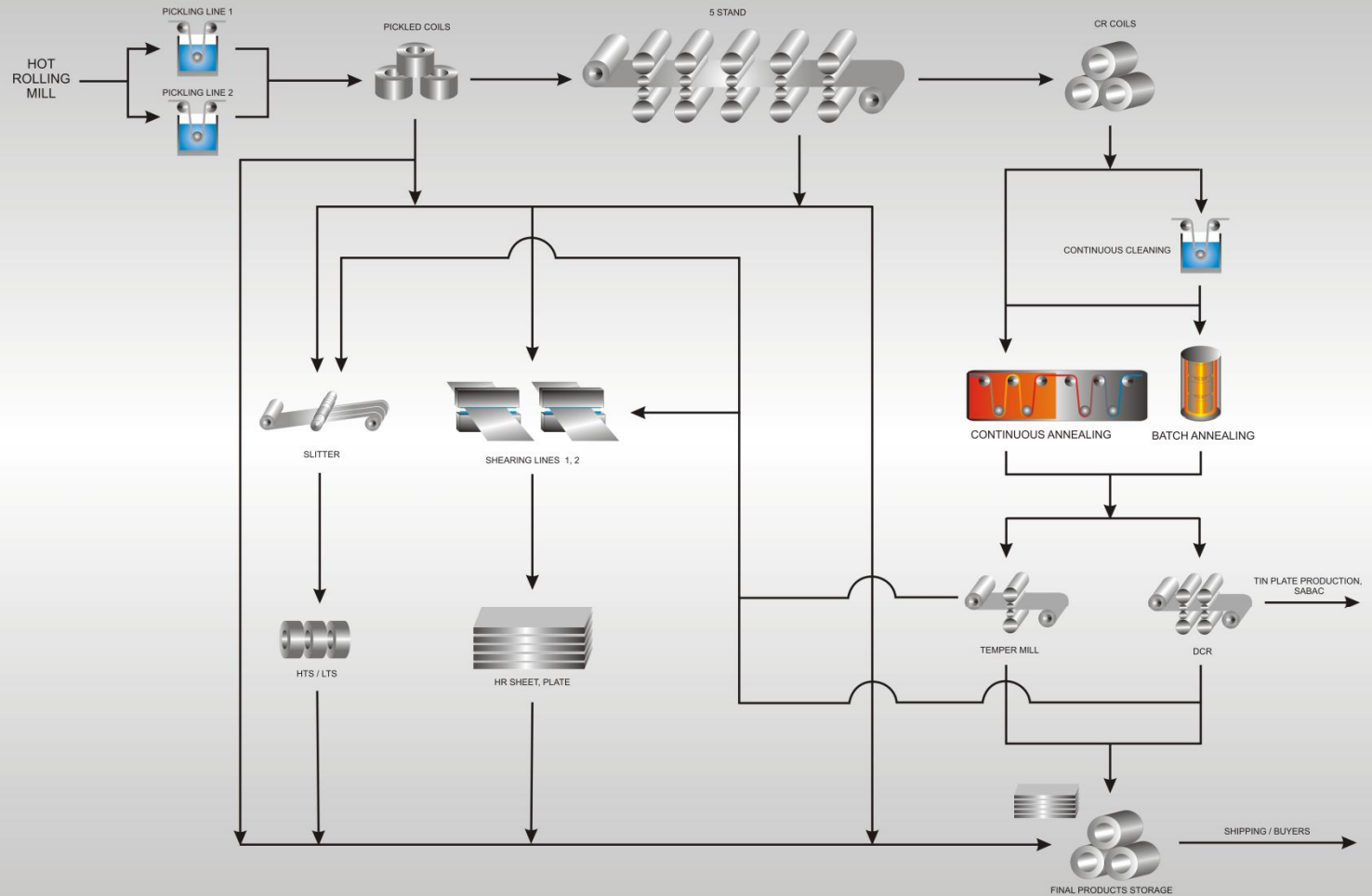
COLD ROLLING MILL: PICKLING, ANNEALING, TEMPERING

HBIS GROUP Serbia Iron & Steel Ilc Belgrade

GENERAL INFORMATION ON PLANT FACILITIES

PICKLE LINE 1
PICKLE LINE 2
5-STAND TANDEM MILL
CONTINUOUS ANNEALING
BATCH ANNEALING

DCR
TEMPER MILL
SLITTING LINE
SHEAR LINE 1
SHEAR LINE 2



HBIS SERBIA

GENERAL INFORMATION ON PLANT FACILITIES



Sabac, Tinplate Production Plant

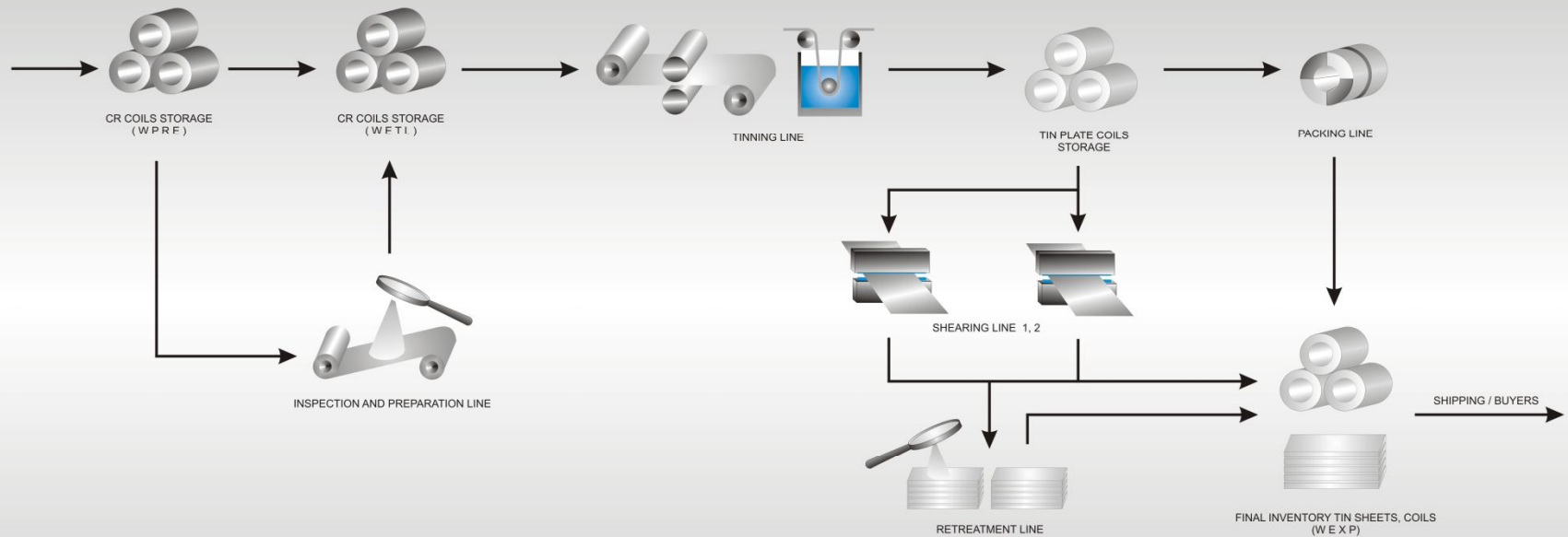
HBIS SERBIA

PRODUCTION CYCLE

TIN MILL SABAC: TINNING

HBIS GROUP Serbia Iron & Steel Ilc Belgrade

GENERAL INFORMATION ON PLANT FACILITIES



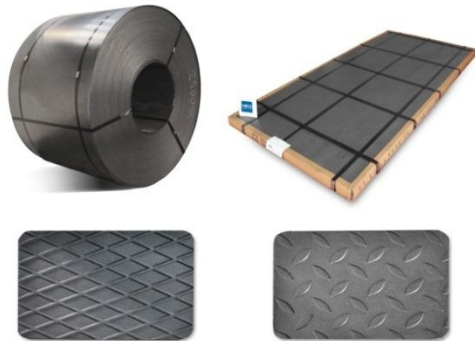
ETL: Electrolytic tin coating line

TSL 1 and 2
Lines for cutting and packaging of tin plate

HBIS SERBIA

PRODUCTS INFO

GENERAL INFORMATION ON PLANT FACILITIES



HOT ROLLED PRODUCTS

Dimensions:

- thickness from 1.5 mm up to 15 mm
- width from 720 mm up to 2050 mm

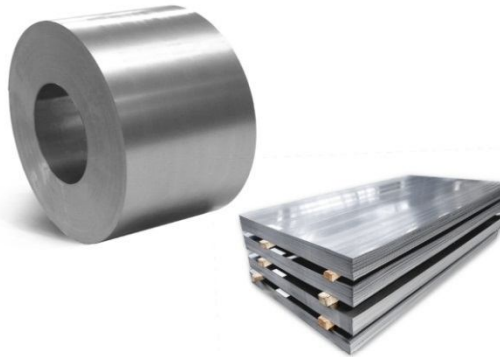
- Hot rolled strip
- Hot rolled pickled strip
- Hot rolled patterned strip
pattern shapes: tear drop and diamond

Form for delivery:

- Hot rolled strip in coils
- Hot rolled strip in sheets
- Hot rolled strip in slit coils

Application in manufacturing of:

- constructions/structures
- parts for machines, tools and equipment
- wheels and transportation means in automotive industry
- pipes and profiles
- tanks, canisters, boilers, high-pressure vessels
- shipbuilding



COLD ROLLED PRODUCTS

Dimensions:

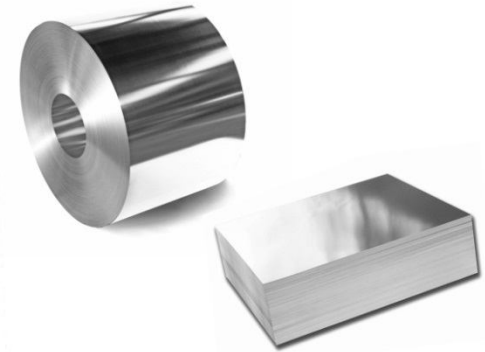
- thickness from 0.35 mm up to 3 mm
- width from 700 mm up to 1500 mm

Form for delivery:

- Cold rolled strip in coils
- Cold rolled strip in sheets
- Cold rolled strip in slit coils
- Cold rolled non annealed coils (Full hard)

Application in manufacturing of:

- constructions/structures
- home appliances equipment
- metal furniture and metal-ware products
- metal packing manufacturing
- parts for automotive industry
- pipes and profiles
- for enameling



TIN PLATE

Dimensions:

- thickness from 0.13 mm up to 0.49 mm
- width from 685 mm up to 976 mm

Form for delivery:

- Tin material in coils
- Tin material in sheets

Application of material:

in packing industry for packing of various products such as:

- food for human and animal consumption (manufacturing of various types of cans, covers, bottle caps, decorative cans)
- for packing of products in chemical industry
- for packing of products in pharmaceutical industry
- for packing of products in cosmetic industry
- in smaller range it is used for manufacturing of parts for automotive industry
- heating devices, toys, etc.



HBIS GROUP Serbia Iron & Steel Ilc Belgrade

Bulevar Mihajla Pupina 6, Belgrade - New Belgrade 11000, Serbia

Mail forwarding address: Radinac, Smederevo 11300, Serbia

www.hbiss Serbia.rs

HBIS SERBIA